

Name of Child: \_\_\_\_\_ Date: \_\_\_\_\_

## Using CHG Cloths in the Hospital If your child is less than 20 pounds

### What are CHG cloths?

CHG (2% chlorhexidine gluconate) cloths are germ-killing (antiseptic) wipes used to clean the skin. Germs live on the skin. CHG cloths kill 99% of the germs on the skin to help prevent germs from causing a serious infection.

### When should CHG cloths be used?

- CHG cloths will be used every day when your child is in the hospital to reduce the risk of infection if your child:
  - has a central line
  - is being cared for in any of the Intensive Care Units.
- Before your child has surgery or a procedure where the skin will be broken.
- If a regular bath is needed or wanted, CHG cloths are used after bathing, not before. Wait a few minutes after the bath, until skin is dry and cool. Cool and dry skin is less likely to get irritated and red from the CHG cloths.
- If your baby is in the Neonatal Intensive Care Unit (NICU), the use of CHG cloths will depend on your baby's age. Ask your nurse or doctor if you have any questions.

### Do not use CHG cloths if your child:

- has an allergy to CHG or aloe vera
- is receiving radiation therapy
- is receiving Thiotepa (a chemotherapy drug)
- has severe skin breakdown, rash, burns or open skin wounds

### How to use the CHG cloths:

1. Clean your hands with warm soapy water.
2. Your child can have a bath before the CHG cloths are used. If a bath is given, use shampoo on your child's hair. Use a clean towel to dry your child. Dry the hair after the bath.
3. Keep the cloths away from your child's eyes, ears, and mouth.
4. Wipe the skin with a CHG cloth using a circular or back and forth motion over the area to be cleaned. Gently wipe the skin, **do not scrub**.
5. After using the CHG cloths, wrap your child in a clean towel until the skin is dry. Wet CHG in between skin folds and around your child's neck can cause irritation.
6. Once the skin is dry, dress your child in clean washed clothes or a clean hospital gown.

**Do not:**

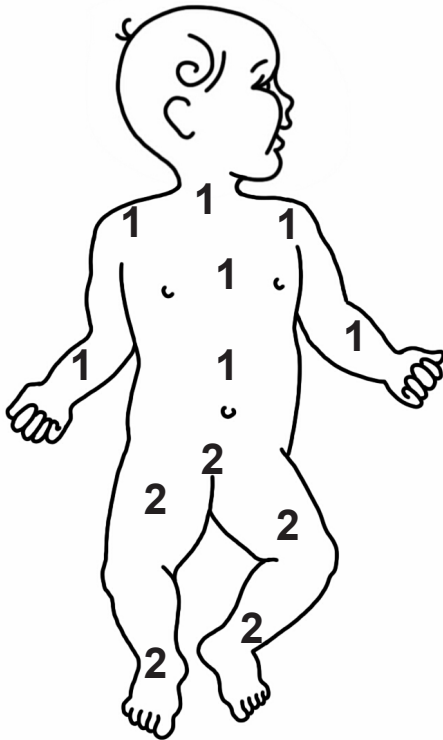
- Do not use conditioner or any other hair products except for shampoo.
- Do not rinse or wipe off the skin after using the CHG cloths. It is normal for the skin to feel sticky or tacky. Once the skin is dry this feeling will go away.
- Do not use lotion.
- Do not put the cloths in the microwave.
- Do not flush the cloths down the toilet.

**Use one package (2 cloths) for a child less than 20 pounds**

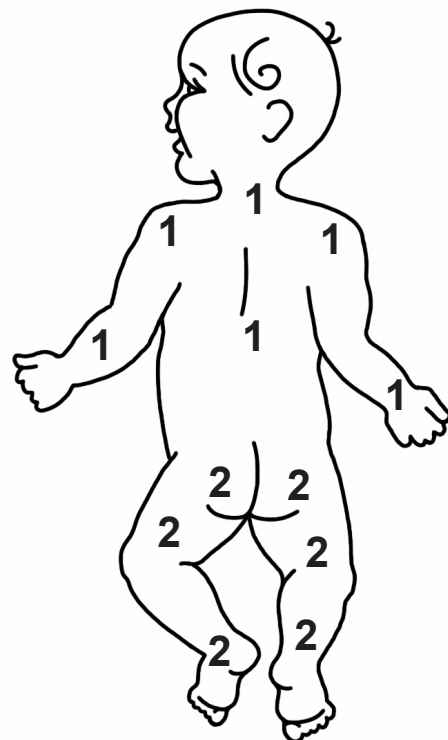
**Cloth 1:** Neck (front and back), chest, belly, both arms, and back.

**Cloth 2:** Legs, bottom, and private parts. Wipe the private parts from front to back.  
Wipe the private parts last.

**Front**



**Back**



## Now that you've read this:

- Tell your nurse or doctor why CHG cloths are used in the hospital.  
(Check when done.)
  
- Tell your nurse or doctor when and how you will use CHG cloths in the hospital.  
(Check when done.)



If you have any questions or concerns,  
 call your child's doctor or  call \_\_\_\_\_

If you want to know more about child health and illness,  
visit our library at The Emily Center at Phoenix Children's Hospital  
1919 East Thomas Road  
Phoenix, AZ 85016  
602-933-1400  
866-933-6459  
[www.phoenixchildrens.org](http://www.phoenixchildrens.org)  
[www.theemilycenter.org](http://www.theemilycenter.org)  
Facebook: [facebook.com/theemilycenter](https://www.facebook.com/theemilycenter)  
Twitter: @emilycenter  
Pinterest: [pinterest.com/emilycenter](https://www.pinterest.com/emilycenter)

### Disclaimer

The information provided at this site is intended to be general information, and is provided for educational purposes only. It is not intended to take the place of examination, treatment, or consultation with a physician. Phoenix Children's Hospital urges you to contact your physician with any questions you may have about a medical condition.

April 20, 2015 • DRAFT to Family Review  
#1604 • Written by Esther Muñoz, RN, BSN, CIC and Kiley Bernhard, MPH  
• Illustrated by Christine Remmel

## Using CHG Cloths in the Hospital If your child is less than 20 pounds

Name of Health Care Provider: \_\_\_\_\_

Date returned: \_\_\_\_\_  db

### Family Review of Handout

Health care providers: Please teach families with this handout.

Families: Please let us know what you think of this handout.

Would you say this handout is hard to read?  Yes  No

easy to read?  Yes  No

Please circle the parts of the handout that were hard to understand.

Would you say this handout is interesting to read?  Yes  No

Why or why not?

Would you do anything differently after reading  
this handout?  Yes  No

If yes, what?

After reading this handout, do you have any  
questions about the subject?  Yes  No

If yes, what?

Is there anything you don't like about the drawings?

Yes

No

If yes, what?

What changes would you make in this handout to make it better or easier to understand?

Please return your review of this handout to your nurse or doctor or send it to the address below.

The Emily Center  
Health Education Specialist  
Phoenix Children's Hospital  
1919 East Thomas Road  
Phoenix, AZ 85016-7710

602-933-1395

**Thank you for helping us!**